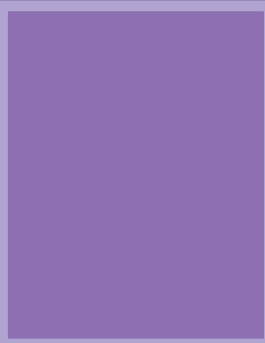
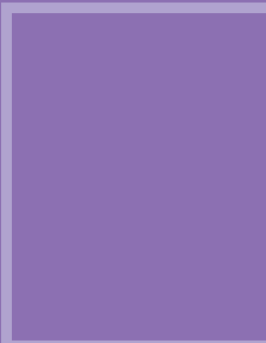
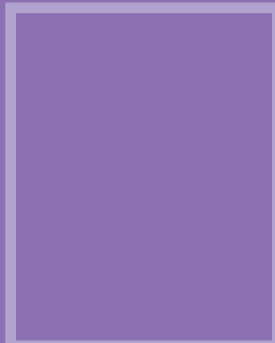
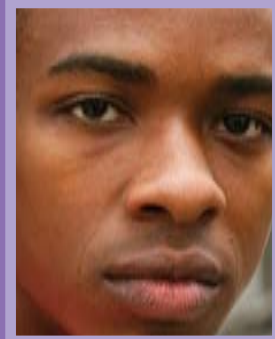
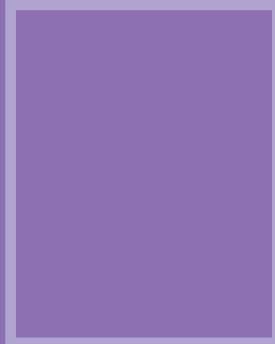


The Corner Health Center Annual Report 2006-2007



Caring for the Next Generations



Dear Friends,

The incredible support that we received this past year is a testament to our community's investment in the health of young people.

No one is more invested in the future of The Corner Health Center than our Capital Campaign Committee. After purchasing the adjacent building in 2006, we quickly set out to assemble a dream team Capital Campaign Committee. And we got one! Led by David Lutton, President of Charles Reinhart Company Realtors and Jean Nelson, board trustee, the campaign committee enthusiastically agreed to raise \$1.5 million to make our clinic expansion a reality. A year later, we have raised over \$900,000 towards our goal!

We are humbled by the generosity of the donors who provided lead gifts and to the board of trustees and capital campaign committee members for their generous donations in addition to their time and talents. In the New Year, we will reach out to our loyal base of support to help us attain this important goal. We hope that we can count on you!

Support this year also came from several generous private foundations and community groups. In particular, we are very grateful to the James A. and Faith Knight Foundation, Buhr Foundation and Galens Medical Society for funding a much-needed \$40,000 upgrade to The Corner's computers and network system. The project was completed in FY07 and has greatly improved our efficiency.

Donated services from the University of Michigan Department of Psychiatry helped to create Mom Power!, an on-going weekly support group under the direction of a UM clinical psychiatrist. The course is offered free of charge to teen mothers who face multiple challenges in their efforts to be good parents.

In addition, a collaboration between The Corner Health Center and the Community Support & Treatment Services (CSTS) program of Washtenaw County Health Organization created a Foster Care Resources Program serving adolescent patients who have been in an out-of-home placement and are almost aging out of the system (at age 18). The program provides skill building and case management services to prepare these young people to become self-sufficient.

With the \$1.5M Capital Campaign goal in sight, we are excited to finally build additional clinic space to accommodate the complex needs of our patients. Together we will provide high quality health services to low income young people: The Corner is a community resource of which we can all be proud. Thank you!



Joan Chesler, PhD
Executive Director



David Share, MD, MPH
Medical Director



Pauline Reisner
President
Board of Directors

The Corner Capital Campaign

Capital Campaign Committee

David Lutton, Co-Chair

Jean Nelson, Co-Chair

Sharon Collins Apollo

Betty Ballard

Jack Billi, MD

Joan Chesler

David Clifford

Tom Daniels

Anne Glendon

Norman Herbert

Barbara Kessler

Stacy Markel

Dan McMurtrie, MD

Valerie Mills

Suzanne Mondalek

Jennifer Poteat

Pauline Reisner

Prue Rosenthal

John Shea

Errol Soskolne, MD

Candace Spaulding

Cosmas Van De Ven, MD

Cynthia Wilbanks

Alford Young, Jr.

Honorary Committee Members

Letitia Byrd

Joe Fitzsimmons

Peter Fletcher

James Hawkins

David Share, MD, MPH

“At The Corner, we work with a high-need, low-resource community. I have been surprised that there are so many ways to be impoverished: educational, nutritional, financial, housing...”

- a Corner social work intern

Caring for the Next Generations: Healthy Teens Today and Tomorrow

For more than 20 years, The Corner has been providing care to at-risk teens in its present location in downtown Ypsilanti with only seven exam rooms. In that time, we've increased patient volume and the range of services provided to our clients including mental health services.

The Corner has purchased the adjacent building in order to meet the growing needs of young people. Our new mental health services have strained The Corner's capacity. The Capital Campaign will double the number of exam rooms and private office space for clinical and supportive services. To complete this expansion and add new programming, The Corner needs to raise \$1,500,000.



“I always look forward to coming to The Corner. Everyone is so sweet to me and my baby, and they always remember who I am.”
— a Corner patient

CAMPAIGN BUDGET

BUILDING PURCHASE REIMBURSEMENT	\$178,000
RENOVATION	779,000
CAMPAIGN COSTS	94,000
NEW PROGRAMMING	299,000
ENDOWMENT	150,000
TOTAL	\$1,500,000

The Corner Health Center Today: Our Challenges



The current facility has **too few exam rooms** (less than 1.5 per clinician when the standard for clinics with trainees is 3:1). This creates bottlenecks in flow, leading to wait times that frustrate young clients, especially mothers.

The facility has **too few private offices** for counseling and support services. In the past 20 months we've added

- *Two psychiatrists and two psychiatric fellows,*
- *One social worker, and a foster care case manager who helps patients who are transitioning out of foster care, and*
- *MomPower - a support group for teen moms.*

The Women Infants and Children (WIC) nutritional services program has **inadequate space**. Vital signs and weight are recorded, and iron testing, lead testing and nutritional counseling are performed, in a room that is too small for these purposes.

New exterior signage is needed to raise awareness of The Corner in the community and to make it easy for teens to locate the facility.

"I learned what I want in my life and what I really need, too. The Corner taught me to see what's actually important: taking care of myself."

— a Corner patient



The Corner Health Center now consists of two adjoining 20' wide buildings (shaded area). The new addition is a third adjoining 20' building, offering a practical and cost-effective solution for growing client needs.

The Corner Health Center Tomorrow: With Your Help

Capital Campaign Improvements

- seven new exam rooms to relieve the bottleneck in patient flow and decrease patient wait times
- six additional offices for support services that will include counseling and psychiatric care
- an expanded WIC (Women Infant and Children) area for nutrition education and supplemental food provision
- a new lab near the clinicians charting room so clinicians can communicate more efficiently with the medical assistants
- increased building visibility through new signage and a student-painted exterior wall mural
- as many "green initiatives" as possible including new windows for the entire building to save on heating and cooling costs
- support for increased programming and operational costs for two years and
- an endowment fund to assure the continuation of our much-needed programs.



We received donations and pledges to the Capital Campaign from the following generous donors. Listings reflect donations received through September 30, 2007.

Carol and Herbert Amster
Sharon C. and Eric Apollo
Martha and Robert Ause
Betty Ballard
Betty and John Barfield
Carole and Dennis Becker
Letitia J. Byrd
Ceridian
Joan and Mark Chesler
Carol and David Clifford
Julie and Robert Connors
Kristen and Matthew
Cunningham
Martha and Thomas
Daniels
DeRoy Testamentary
Foundation
Kimberly and Phillip Ferrell
Richard A. Fischer, Jr.
Rev. Nora A. Fitzpatrick
Beth and Joe Fitzsimmons

Gretchen Gardner and
Joshua Pokempner
Anne and Paul Glendon
Lauren Gold
Deborah and Norman
Herbert
Sheryl Hirsch, MD and Jack
Billi, MD
Robert Holkeboer
Glenda Erickson Horvath
and Ronald D. Horvath
Gloria Jackson
Edwina Jarrett
Phil Jenkins
Mary Z. and Kent
Johnson, MDs
Susan Kattelus
Barbara Kessler
and Richard Soble
Cindy and Louis
Kleinsmith

Marcia and John Knapp
Lisa Lewis
Nancie Loppnow and
Donald Loppnow
Louise and David Lutton
Valerie Mills and Andrew
Fanta
Suzanne Mondalek
Gayle and Bruce Moyer
Theresa and Michael
Mulvihill
Jean and Jim Nelson
Carla O'Connor
and Alford Young, Jr.
Tamara Pelish, MD and
Wesley Beemer, MD
Jennifer R. Poteat
Elaine and Daniel Quirk
Pauline Reisner
and Mark Bernhard

Prudence and Amnon
Rosenthal, MD
Carole and Mitchell Rycus
Norma and Dick Sarns
Kate Jones Share
and David Share, MD
Elaine and Ronald Shaw
Ray Sidney
J. Cedric Simpson
Simone Strong Powell
The Harry A. and Margaret
D. Towsley Foundation
Sally and Cosmas
Van De Ven, MD
Helen and James Vick
Londa Weisman
and Sidney Knafel
Barbara and Jack Weiss
Nannette White
K. Roth Woods

The Corner's Quality Medical Care

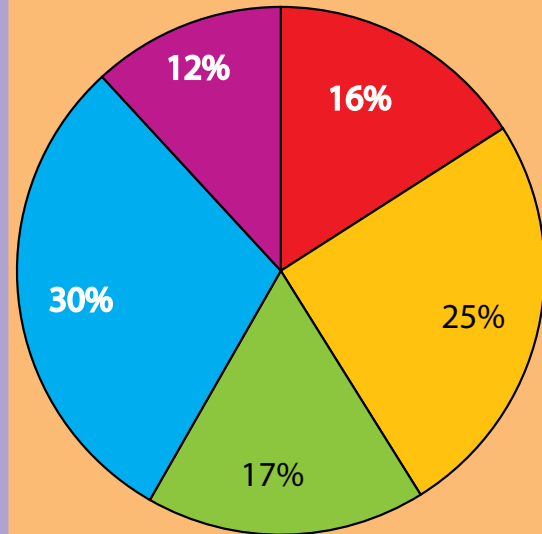
OUR PATIENTS

This year The Corner provided care to nearly 1,700 patients who made 6,800 visits to The Corner. Eighty percent were adolescents between the ages of 12 and 21. The remaining 20 percent were infants and toddlers. The Corner sees an approximately equal number of African American and Caucasian patients and all feel welcome. Virtually all were low income as determined by the federal poverty scale.

GENERAL MEDICAL SERVICES:

- Wellness care including screenings and immunizations
- Physical exams, including school and sports physicals
- Medical care for illness
- Psychiatric care
- Short-term therapy, supportive and crisis counseling
- Prenatal and postpartum care
- Pediatric care for the children of adolescents
- Family planning education and birth control services
- STD testing, treatment and follow-up
- Free, confidential HIV/AIDS counseling and testing
- Nutrition education and counseling

Use of Clinical Services



- Pediatric Medicine
- Adolescent Medicine
- Family Planning and Gynecology
- Obstetrics/Prenatal visits
- Mental Health Services



“They made me feel so good about being a new dad. The nurse kept telling me how important I was to my little girl. No one else tells me that.”

— a Corner patient

More than Medical Care

“Kids come in for physicals, general issues, and are then asked basic and not-so-basic questions: how are you eating? What kinds of risks are you taking with things like tobacco, alcohol, sex, or drugs? How is your mental health? What is your home life like?”
- a Corner physician

MISSION STATEMENT

The Corner Health Center’s mission is to help young people, ages 12-21, make healthy choices now and in the future by providing high-quality primary health care, education and support for adolescents and their children without regard to income level.

Maternal and Infant Health Program (MIHP), a support program for pregnant and parenting teens that provides coordinated nursing, social work and nutritional services for Medicaid-eligible pregnant and postpartum women.

Women, Infants and Children Supplemental Food Program (WIC) offers food coupons, nutrition education and surplus food to low-income pregnant and parenting women and their children.

The Corner Store, a unique program in which patients earn “points” for attending health care appointments, especially preventive care visits. Clients then use points in The Corner Store to purchase personal care products, baby essentials including diapers, strollers, clothing and blankets, and gift cards to area movie theatres and stores.

The Patient Assistance Fund helps young people pay for urgent transportation to and from The Corner or hospital appointments, prescription drugs, and emergency medical needs.

The Corner’s Food Pantry offers non-perishable staples like cereal, pasta, and canned goods and is free to all patients.

The Corner Theatre Troupe, a group of high school peer educators perform interactive, educational skits on dating violence, teen depression, HIV and STIs, and prevention of the use/abuse of alcohol and other drugs.

You and Your Baby, a series of booklets on parent-child interactions produced by The Corner Health Center. Written at the third grade level, these booklets teach limit setting and communication skills along with information about child development. They are distributed free of charge to all new parents and sold nationally to organizations that serve low income women and children. The booklets are available in English and Spanish.

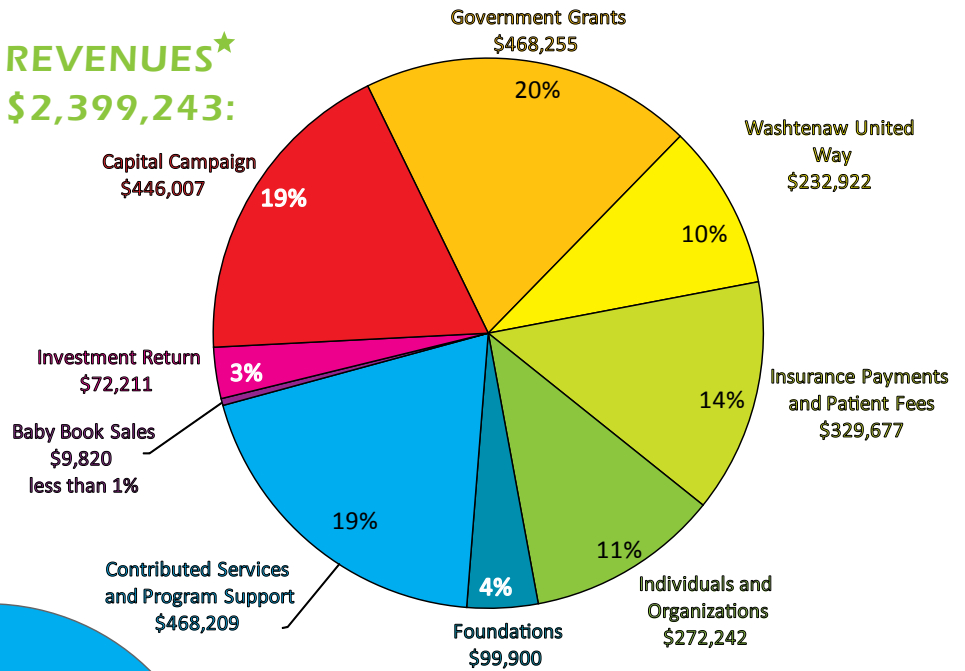


Our Support

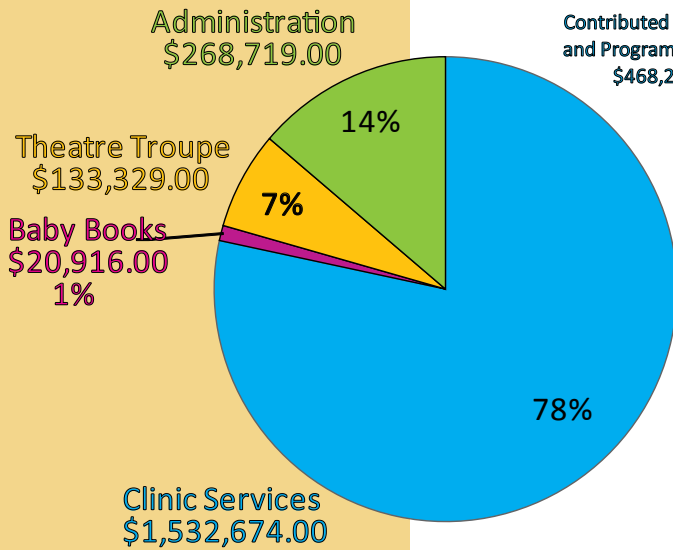
“Everything I need for my body and even my mind is right here. All in one place. Makes it a lot easier, with my baby and everything.”

— a Corner patient

REVENUES★ \$2,399,243:



EXPENSES \$1,955,633:



★ The Corner's revenues exceeded expenses in FY07 due to Capital Campaign contributions not yet spent.

By Mail

Complete the enclosed envelope and send it with your check to:

The Corner Health Center
Annual Fund
47 N. Huron St.
Ypsilanti, MI 48197

By Phone

Call (734) 484-3600 x236 to make a pledge or gift by credit card.

Online

If you would like to make a secure online donation to The Corner Health Center through Network for Good, go to: www.cornerhealth.org/donate.html.

Matching Employer Gift

Matching gifts are an easy way to double or even triple the size of your gift to The Corner without spending a dollar more! Thousands of companies match the charitable contributions of their employees. Please check with your employer to see if you qualify for a matching gift.

Gifts of Securities

It is easy to transfer shares to The Corner Health Center. Call your broker with our account:

Account Name: YAHC (Young Adults Health Center) #2
Account Number: 27746279
DTC #: 0793 (for electronic transfer)
Brokerage: Stifel Nicolaus

Important Note: Please ask your broker to call Rex Stanczak, 734-213-5103 with your name, the name of the security and date of transfer to The Corner Health Center.

Planned Gifts and Bequests

A planned gift or bequest can help ensure the health and well being of generations of young people to come. Planned gifts may include gifts of cash, securities or real estate. The right gift for you is one that you have discussed with your spouse, children or family and accomplishes your charitable interests.

Suggested phrasing for bequests: I give, devise and bequeath X dollar amount or X asset to: The Young Adults Health Center, Inc. dba The Corner Health Center, a 501 (c)(3) non-profit organization located at 47 N. Huron St., Ypsilanti, MI 48197, for its general use and purposes.

A Big Thank You to Our Partners

THE UNIVERSITY OF MICHIGAN

The Corner Health Center is grateful for the ongoing support of the University of Michigan Health System. Each year, the University of Michigan generously donates the services of physicians, a nurse midwife and residents to The Corner. These dedicated faculty in pediatrics and family medicine supervise the residents and make it possible to provide care to our patients. The department of Psychiatry donates the services of two psychiatrists and a psychiatric fellow. Last year, the total value of donated services from the University of Michigan was more than \$300,000.

WASHTENAW COUNTY HEALTH DEPARTMENT

The Women, Infants, and Children (WIC) Supplemental Food Program, which provides food coupons and nutritional counseling for low-income young women and their children, is funded through the Washtenaw County Health Department.

OTHER COMMUNITY PARTNERSHIPS:

- Washtenaw Community Health Organization (WCHO)
- UM Law School: Pediatric Advocacy Initiative
- St. Joseph Mercy Health System Department of Obstetrics and Gynecology
- Dawn Farm
- HIV/AIDS Resource Center
- Ozone House
- SafeHouse Center

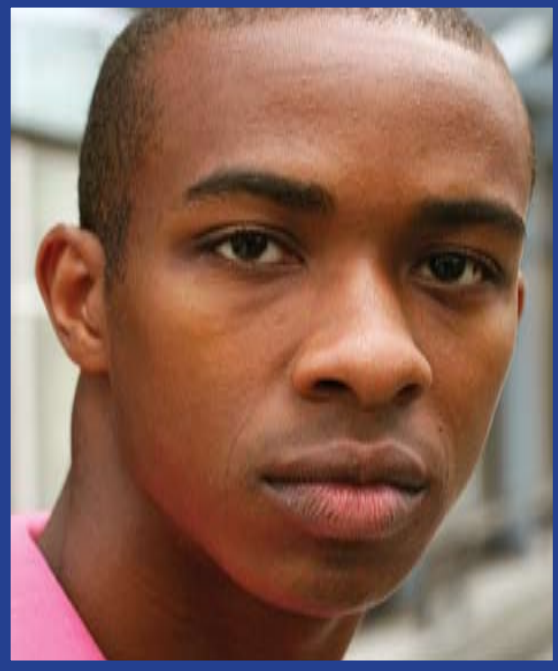
YOU HELPED US ACCOMPLISH ALL THIS:

98% of Corner babies were born at a normal birth weight.

Over 550 young women, infants and children received nutritional counseling and food coupons through the WIC Supplemental Nutritional Program.

The Corner provided 7674 clinical services to low income young people.

404 patients received help in applying for health insurance.



“The Corner is a safe haven for mental and emotional care. We help underserved teenagers so they do not have to go through the adult bureaucracy. There is an emphasis on confidentiality.”

— Corner Nurse

ON BEHALF OF OUR PATIENTS, A HEARTFELT THANK YOU.

Generous donors make our work possible. This list recognizes gifts made between October 1, 2006 and September 30, 2007. Donations made after September 30, 2007 will be in the next annual report. We apologize for any errors or omissions. Please help us correct our records by calling (734)484-3600, ext 237.

In Honor

Jewish cultural society
2007 B'nai Mitzvah class
Sherry and
Seth Moravy-Penchansky

Dr. and Mrs. Harvey Amoe
Elizabeth D. and John E.
Sprague
Jane and Price Watts

Eleanor Anasar
Robert Fulton

Allen Batteau
Kristin McGuire and David
Lowenschuss

Florence M. Becker
Lynne and J. Dennis Bush

Eva Bendit Bernstein
Patrice Aaron
Leah Colmer
Joseph Epstein
Eileen and Gary Freed, MD
Jason Gumenick
David A. Gumenick
Susan Hazard
Linda Krieger
Carol Lessure
Michael J. Morse
Andrew Moss
Darlene and Thomas
O'Brien
Thomas Ostrander
Ron Perry
Donna and Howard Plotkin
Diane Solomon
Beth Wilensky

Erin Brown
Magdalena Spiewla

Sallie Churchill
Emily Meuleman and
Doug Evett

**Edgar L. and Patricia B.
Convery**
Susan Kattelus

Joan Chesler and David Share
Heather and Steven Tower

Mr. and Mrs. Kurt Delbanco
Elena and Nicholas
Delbanco

Cecelia Epstein
Srinika and Toby Jayaratne

Jane Ewy
Anne B. and Richard
Bauman
Katherine and Peter Woo
Carole and Mitchell Rycus

**Brent and Kristen's
First Anniversary**
Kristine and David Denzin,
MD

Their healthy grandchildren
Casey Hines and Barret
Vance

The Freethy Grandchildren
Joann and John Freethy

Barbara Hooberman, MD
Mary Z. and
Kent Johnson, MDs

Sylvia Markel
Harold Weiss

Marcel Muller
Lenore B. Gerstein

Joan Sheard and Myrna Yeakle
John Sheard

Carole and Mitchell Rycus
Stacy and
David Markel, MD

David Share
Lizabeth and Gerry
Anderson
Gale Mondry and Bruce
Cohen
Barbara and Darrell
Campbell, MD
Toby Etkin

**Kate Jones
and David Share, MD**
Lynn E. Stern and
Neal W. Persky, MD

Emma Share
Nancy Vettorello

Ruth Share
Ida and Albert Rosenblum
Judith Share

**Gayle Rosen and
Andy Sugarman**
Nancy Nelson and
Richard Hughes

Jewell Taylor
Sally and David Kennedy

Nannette White
K. Roth Woods

In Memory

Robert Allen
Henry Meares and Paula
Allen-Meares

Jimmie Braun
Harold Weiss

Walter Davies
Douglas Davies and Tobi
Hanna-Davies

Mary Jane Duncan
John Sheard

Johan Eliot, MD
Leslie and Robert Hefner

Ethel Falit
Elly and Harvey Falit, MD

Eugene Feingold
Daphne and
Raymond Grew

Pat Flynn
Carol and Mitch Fleischer

Tavi Alexander Gold
Katherine Gold, MD and
Gregory McLane

Nathan Horvath
Diane and Jerry Zmikly

Marvin Howard
Ruth Share

Martin R. Johnson
Linda and Bob Johnson

John Maharg
Lois Maharg and
Eric Burton

Robyn Menin
Mary Z. and Kent
Johnson, MDs

Suzanne Meyer
Claire Meyer Galed

Betty Newkirk
Nancie Loppnow and
Donald Loppnow

Harold A. Oberman, MD
Marylen Oberman

Beverly C. Payne, MD
Elizabeth Payne

Estelle Mendes Reiner
Lois and David Baru

Gary Saxonhouse
Arlene Saxonhouse

Rose Schreiber
Jacob Sayraf

Mary Sexton
Carole and Mitchell Rycus

Nat Share
Evelyn Burton
Irving F. Burton, MD
Lee Burton and
Roberta Shaw-Reeves
Kate Jones-Share and
David Share
Sophie Fierro-Share and
Daniel Share
Judith Share
Ruth Share

Jeffrey Strouss
Carole and Mitchell Rycus
Mary and John Strouss

Paola Valsania
Robert Holkeboer
Kathleen Longo, MD and
James Mattimore, MD

Earl Weingarten
Ruth Share

Raoul Weisman
Beatrice and Robert Kahn
Londa Weisman and
Sindey Knafel

Mary Whiting
Helen and Philip Barnes
Joan and Mark Chesler
Jeanne Dobes
Lucille Hotchkiss
Lenore and Jim Kolhoff
Carol Ann Lantz
Kathleen E. Muench
Lisa and James Murphy
Cynthia and Verlyn
Nachtrieb
Mary Ann Raske
Connie A. Robinson
Carole and Mitchell Rycus
Crystal Shaw
Megan L. and J.J. Vicari

Eve and Teddy Zeiler
Elly and Harvey Falit, MD

Foundations, Churches and Organizations

Altarum

Ann Arbor Area Community
Foundation

Ann Arbor Evening Lions Club

Ann Arbor Friends Meeting

Ann Arbor Jewish Cultural
Association

ARMI

Beth Israel Congregation

Buhr Foundation

Burton-Share Management Inc.

Ceridian

Child Health Associates

Columbia Asset Management

Costley Family Foundation

Credit Bureau of Ypsilanti

De Varti Charitable Trust

Delta Kappa Gamma Society

Dempsey, Inc.

Edward F. Redies Foundation

First Congregational Church of
Ann Arbor

First Presbyterian Church

First Unitarian Universalist
Church of Ann Arbor

Galens Medical Society

The George M. Hull Memorial
Fund

Hiller Incorporated

James A. and Faith Knight
Foundation

Kiwanis Club of Ann Arbor

Kiwanis Club of Ypsilanti Youth
Services

Jan and Bob Lyons Foundation

Ladies' Literary Club

Michigan Student Financial Aid
Association

C. S. Mott Foundation

Pat Walters & Sons

Pfizer Global R&D, Ann Arbor
Labs

Pfizer Matching Gifts Program

Presbyterian Women's
Association, First Presbyterian
Church of Ypsilanti

Rotary Club of Ann Arbor

Sojourner Foundation

St. John's Episcopal Church

Temple Beth Emeth Sisterhood

Toyota Technical Center

\$10,000+

Anonymous (2)

Elizabeth W. Kaufman

Margaret Ann and John Riecker

\$2,000+

Anonymous (2)

Barbara Anderson
and John H. Romani

Evie Gauthier and Leigh Daniels

Anne and Paul Glendon

Wendy and James House

Mary Z. and Kent Johnson, MDs

Norma and Dick Sarns

Ruth Share

Janet Shermer

\$1,000+

Anonymous (3)

Mary and Harvey Amoe, MD

Nancy and Eric Bates, MD

Carol and David Clifford

Michele Eickholt
and Lee Green, MD

Yi-Tsi and Albert Feuerwerker

Rita and Charles Gelman

Naomi and Ted Harrison

Lester Johns

Linda and Bob Johnson

Barbara Kessler and Richard Soble

Anne and Jeff Kittendorf, MD

Louise and David Lutton

Miriam and Richard Meisler

Eva Mela

Robin and Stanley Mendenhall

Rita L. Mitchell
and Edward L. Steinman

Gale Mondry and Bruce Cohen

Jennifer R. Poteat

Valerie and Victor Rosenberg

Arlene Saxonhouse

Eileen and Ronald Weiser

\$500+

Anonymous (6)

Evelyn Burton

Martha Darling and
Gilbert Omenn, MD

Marcia Feingold

Dorothy L. Fillingier

Betsy Foxman
and Michael M Boehmke, MD

Ann Friedman

Teresa Gallagher
and Jonathan Ayers, MD

Katherine Gold, MD
and Gregory McLane

Max A. Heirich

Emily Jenkins and Jon Lieberman

Judith and Peter Kleinman, MDs

Claudia and Tom Larson

Kirsten and James Levinsohn

Lawrence Lup, DDS

Barbara Maes

Stacy and David Markel, MD

Betsy and Ben McCallister, MD

Mary Ann and Terrence
McDonald

Kathryn and Robert McWilliams

Valerie Mills and Andrew Fanta

Mr. and Mrs. Franklin S. Moore

Arthur Oleinick, MD

Tamara Pelish, MD
and Wesley Beemer, MD

Evelyn and Friedrich Port, MD

Elisabeth Quint, MD
and B.A. van der Pluijm

Mary Ann Raske

Pauline Reisner
and Mark Bernhard

Patricia Saad and Andy Muth

Ann Sneed Schriber
and Thomas J. Schriber

Jane and Thomas Schwenk, MD

Elaine and Ronald Shaw

Marguerite and Marshall
Shearer, MDs

Catherine B. and Norman
Thoburn

Robin and Harvey Wax

\$250+

Anonymous (10)

Lizabeth and Gerry Anderson

Liz and Enoch Brater

Jane and Tony Burton, MD

Eric Burton and Lois Maharg

Lee Burton
and Roberta Shaw-Reeves

Susan and Oliver Cameron, MD

Barbara and Darrell
Campbell, MD

Kathy and Angelos
Constantinides, MD



Kristen and Matthew
Cunningham
Sandra and Sheldon Danziger
Kristine and David Denzin, MD
Judy and Steve Dobson
Molly H. Dobson
Seyhan N. Ege
Margaret and John Faulkner, MD
Sophie Fierro-Share
and Daniel Share
Ann and William Furtwangler
Ruth and Thomas Green
Barbara Hooberman, MD
and Robert Hooberman
Glenda Erickson Horvath
and Ronald D. Horvath
Gloria Jackson
Judy M. Judd
Beatrice and Robert Kahn
Lois and Gordon Kane
Aileen and Harvey Kleiman
Cindy and Lewis Kleinsmith
Marcia and John Knapp
Zoe Koosis
and David Gordon, MD
Jane and Kenneth Lieberthal
Amy Locke, MD
and Brian Mickey, MD
Sandra Loyer
Judy and Lawrence Macklem
Marta Manildi and Paul Courant
Joan and Michael Martin
Miriam Mondry
Gayle and Bruce Moyer
Anne Oldendorf, MD
and Douglas M. Portz, MD
Kathleen and William Parker
John W. Porter
Diana and Robert Richards
Ann and Leslie Rogers
Marilynn M. Rosenthal
Carole and Mitchell Rycus
Joel Saper, MD
Marie Shaffer
Judith Share
John Sheard
Pat Shure
Kathryn and J. Cedric Simpson

Lynn E. Stern
and Neal W. Persky, MD
Mona and Benjamin Stolz
Sandy Talbott
and Mark Lindley, MD
Peg Talburt and James Peggs, MD
Jack H. Tobias
Esther Ullman and Morley Witus
Mary and Maris Vinovskis
Marilyn Warner and John A. Shea
Susan B. West
Dorothy and Brent Williams, MD
Elizabeth Young, MD
and Peter G. Hinman

\$100+

Anonymous (28)
Jamie and James Abelson, MD
Gloria and Gerald Abrams, MD
Nadine and Michael Alpern, MD
Carol and Herbert Amster
Eleanor Anasar and Robert Fulton
Leah and John Atwater, MD
Anne and Dennis Baer
Julia Huttar Bailey and Richard
W. Bailey
Ruth M. Barnard, PhD
Nancy Elizabeth Barr
Cheryl and Percy Bates
Dorothy Bauer
Rachel Bendit
and Mark J. Bernstein
Sarah Clarke Ben-Shahar
and Omri Ben-Shahar
Helen and Theodore Birdsall
Erin Black
Rebecca Blank
and Johannes C. Kuttner
Penny and Jim Blodgett
Martha and David Bloom, MD
Ward D. Bouwsma
Diana J. Bowman
and Robert P. La Jeunesse
Jane Bridges
June and Donald Brown
Frances E. Bull, MD
Alice and Arthur W. Burks
Irving F. Burton, MD
Heidi and David Butz
Susan Cares



Jean Carlberg
and Bunyan Bryant, Jr.
Sally Ann and Ronald Carpinella
Martha Carr and Paul Kacanek
Linda and Robert Chatters
Marjorie and Barry Checkoway
Marjorie and William Chevalier
Jean and Philip Converse
Robert M. Cook
Kathy Daly
Julia De Varti
Rossana DeGroot, MD and
George DeGroot, III,
Margaret and George
DeMuth, MD
Jeannette Duane
and Douglas Shapiro
Charles Duncan
Gloria Jean Dykhouse
Barbara and Herb Eagle
Linda and Andrew Eggan
Judith Elkin
Cheryl and Bruce Elliott
Toby Etkin
Jennifer and Brent Fairfield
Ruth and Stefan Fajans, MD
Sally Fink and Stephen Josephson
Richard A. Fischer, Jr.
Beth and Joe Fitzsimmons
Hon. Nancy C. Francis
Joann and John Freethy
Cheryl and Bartley R. Frueh, MD
Claire Meyer Galed
Enid Galler
Do Garcia, MD and Bob Gillett
Susan Garetz, MD
and Matthew Shapiro
Janet Gilbert
Georgia R. and James E. Gleason
Raymond Goldfarb
Suzanne and Raymond Goodrich
Marla and James Gousseff
Ruth Gramlich
Tammy Greco
Judith Lempert Green
and Robert Green, MD
Caroline and Roger Hackett
Hope Haefner, MD
and Michael Fitzsimmons, MD
Judith Halloran
Tobi Hanna-Davies
and Douglas Davies
Olive E. Hansen
Mimi Harris
Helen and Zeke Hasenfeld
Roberta and James Hause
Leslie and Robert Hefner
Joyce and John Henderson, MD
Margene and Greg Henry, MD
Jolene and Albert Hermalin
Ruth M. Heyn, MD
Kathleen and William Hillegas
Samuel Hirsch, MD
Carol and Gideon Hoffer
Richard Holcomb
Robert Holkeboer
Carol Hollenshead
and Bruce Wilson
Frederick A. Horowitz
Ann and Thomas Hunt

Edwina Jarrett
 Janet and Jerrold Joseph
 Larry Junck, MD
 Mollie Kane, MD
 and David Melnick, MD
 Rachel and Stephen Kaplan
 Bonnie Kay and Tom Robins, MD
 Norm Kerr
 Martha and David Kershaw
 Kathleen and Kenneth Koorhan
 Linda and Melvin Korobkin
 Ruth Kraut and Michael Appel
 Carol Ann Lantz
 Carol and Rick Leyschok
 Louis E. Loeb and Tully Lyons
 Kathleen and Patrick Long
 Kathleen Longo, MD
 and James Mattimore, MD
 Barbara and Edward Lynn
 Jane MacKie and Joseph Farrell
 Theresa B. MacLean
 Virginia Mahle
 Mary and Tom Manchester
 Nancy and Philip Margolis, MD
 Lisa J. McGrath
 Theresa McMahon
 and Barry Fishman
 Elaine McNulty
 and Samuel Epstein
 Catherine and Nelson Meade
 Emily Meuleman and Doug Evett
 Brady Mikusko and Ernest Young
 Carmen and Jack Miller
 Mary Ellen and Ronald Miller
 Myrna and Newell Miller, DDS
 Kristine Miller-Pinti, MD
 and Ben Pinti
 David Mindell
 Gina Morantz-Sanchez
 and Geoff Eley
 Sherry and Seth
 Moravy-Penchansky
 Bernice and William C. Morse
 Cathy and Michael Muha
 Douglas Mullkoff
 and Kathy Evaldson
 Hillary Murt
 and Bruce Friedman, MD
 Melody and Robert Neely
 Frances and Bruce Nelson

Barry Nemon, MD
 and Barbara Stark-Nemon
 June and Ray Nestor
 Rachel Nosowsky
 and James Govert
 Susan and Clifton Olds
 Paul Olson
 Thomas Ostrander
 Tommie Parker
 Jeanne Paul and Tom Nicely
 Elizabeth Payne
 Kathryn Pelz-Davis
 Frances Pinfold Phillips
 and William Phillips
 Vivian and Jack Phillips
 Janet and Steven Popper, MD
 Mary and Richard Price
 Kathleen S. Quinn
 Barbara Reed, MD
 and Philip Zazove, MD
 Nancy and Russell Reed
 Aimee and Jim Reische
 Molly Resnik and John Martin
 Michelle and Timothy Roberts
 Katie and William Robertson
 Marilyn and Robert Robinson
 Kate and Phil Roos
 Margaret and Lawrence Root
 David S. Rosen, MD
 Jeri Rosenberg and Victor Strecher
 Ida and Albert Rosenblum
 Louis Rosenfeld
 Theta and Peter Rosewig
 Joan and Marc Ross
 Veronica and Sanjay Saint, MD
 Debbie Salem
 and Marc Zimmerman
 Kathy Sample
 and William Brinkerhoff
 Trish and Van Sandstrom
 Zona Scheiner and Bennet Wolper
 Amy and David Schulz
 Mary and Arthur Schuman
 Joanna and Douglas Scott
 Harriet Selin
 William Sewell
 Ellie and David Shappirio
 Judith and Ivan Sherick
 Carol and Michael Simon

Sandy and Dick Simon
 Lynn Sipher and Scott Mann
 Ruth Slavin
 and Stephen C. Brown
 Barbara Furin Sloat
 Jody and Joe Slowins
 Sue and Richard Snyder
 Doris and Lawrence Sperling
 Francyne Stacey
 Juliane and Charles Steedman
 Catherine and Robert Stone, II
 Gail and Alan Sugar, MD
 Barbara and Thomas Sullivan
 Charlotte Sundelson
 Rebecca Super
 Madeline and Steven Thiry, MD
 Geraldine and John Topliss
 Emily Twanmo and Tom Stockton
 Andrea and Douglas Van
 Houweling
 Deborah S. Walker
 and Brian Athey
 Karen Wallis
 Joseph Walters
 Mona L. Walz
 Pat and Kenneth Warner
 Susan and Neal Weinberg, MD
 Judy and Howard Weinblatt, MD
 Zelma Weisfeld
 Barbara and Jack Weiss
 Angela and Lyndon Welch

Tracey D. Wentz, MD
 and Chuck Blackmer
 Francey and Jack Wheeler
 Candace White and Michael
 Gordon
 Gale and John Whittier-Ferguson
 Linda Wieser and Jim Rosbe
 Terri Wilkerson and Jim Lee
 Christa and John Williams
 Melina Williams and Matt Anton
 Daniela Wittmann
 Alison and Sean Woodcock
 Ruth and Andrew Zweifler, MD

Up to \$99

Anonymous (28)
 Patrice Aaron
 Fran Cowen Adler
 Catherine and James Allen
 Paula Allen-Meares and Henry
 Meares
 Jill and Robert Arcure
 Anne Marie and Ronald Austin
 Brenda J. Baker
 Martha and James Balmer, III
 Nancy Barbas, MD
 and Jonathan Sugar, MD
 Helen and Philip Barnes
 Lois and David Baru
 Anne B. and Richard Bauman
 Pat and Jay Baxter



Margaret Bayless and Fred Hall
 Julie Bedore and Paul Reingold
 Charlene Kawchak Belitsky
 and Neal Belitsky
 Linda and Karlan Bender
 Ruth and Fred Bertolaet
 Sue and Bill Black
 Ann M. Blakeslee
 and Kim Michael Beneteau
 Marcia Bombyk
 Pauline and Harry Bowen
 Janet and Robert Bower
 Kaye and Michael Brabec
 Mary Anna Bradshaw
 Mary and Bill Browning
 Sue Budin and John Lloyd
 Adrienne and Daniel Burroughs
 Suzanne Butch
 Pamela G. Byrnes
 and Kent Brown
 Kathleen Canning
 Ruth Carey and Jim Crowfoot
 Bogdana and John Carpenter
 Jane and James Cather, PhD
 Mimi Chapman
 and Dietmar Wagner
 Elaine Chottiner, MD
 Catherine Christen
 Karen and Louis Christensen
 Rebecca and Edward Chudacoff
 Leah Colmer
 Sue Contratto and Tom Weisskopf
 Len and Shirley Coombs
 Carol Cramer
 and Thomas Longworth
 Dara Crowfoot and Greg Olson
 Kathleen Culbertson
 Marilyn and David Cummins
 Brenda Curtiss-Manaa
 Susan Cutler and Jeffrey Fessler
 Jennie Day
 Elena and Nicholas Delbanco
 Marguerite Delhey
 Jeanne Dobs
 Karna and Timothy Doyle
 Paula and Jerome Drummond
 Sheri and William Dufek
 Carole and Robert Durgy, Jr.
 Patti and George Eaton

Richard G. Eckoff
 John and Katherine Edgren
 Karen and Allen Ehrlich
 Rebecca Ellish-Stengle and
 William Stengle
 Judy and Todd Endelman
 Phillis Engelbert
 Ann Epstein
 Joseph Epstein
 Donna and Hal Estry
 John L. Etter
 Jane and Wayne Ewy
 Elly and Harvey Falit, MD
 Sheila and Louis Feigelson
 Sheila Feld
 Lolita and Robert Fisher, MD
 Carol and Mitch Fleischer
 Rebecca and Norton Fogel
 Barbara Fortune
 Eileen and Gary Freed, MD
 Diana M. Fritts and John Comfort
 Stephanie Galofaro
 Celia and Paul Gargaro
 Florence and Marvin Gerber
 Lenore B. Gerstein
 Beckey and David Ginbey
 Tom Glaser
 Mona and Ed Goldman
 Sharon Gold-Steinberg
 and Michael Steinberg
 Marilyn and Jim Goodman
 Anitra and Jesse E. Gordon
 Kathleen and Andrew Gordon
 Deborah and Robert Grady
 Carolyn and Chris Grapentine
 Louise and William Gregory
 Daphne and Raymond Grew
 Esta and Larry Grossman
 Pam and Robert Guenzel
 David A. Gumenick
 Jason Gumenick
 Pat Haber and Don Klimaszewski
 Mary Ellen Hagel
 Bonnie and Larry Hagerty
 Carolyn J. Hastings
 Jean and Victor Hawthorne, MD
 Susan Hazard
 Lynda D. Heidman



“We make sure patients have immunizations and get enough calcium, but also make sure they are doing well emotionally. There is such a broad range of care.”
 - a Corner physician

Heidi Cowing Herrell
 and Steve Herrell
 Leon Hieber
 and Mary Jo O’Hotzke
 Dr. and Mrs. H. Mark
 Hildebrandt, MD
 Casey Hines and Barret Vance
 Ann and Milton Hoefle
 Nina and Michael Homel
 Karen and James Horton
 Lucille Hotchkiss
 Joan Hutchinson
 Eileen and Saul Hymans
 Beth Iris
 Judith A. Ivacko, MD
 and Tom Ivacko
 Jennifer and Samuel Jalet
 Srinika and Toby Jayaratne
 Michele Jayne and Bill Brave
 Violet Jewett
 Rebecca Kanner
 Sally and David Kennedy
 Ann and Charles Kettles
 Arlynn and John King
 Lynn Kleiman
 and Herb Malinoff, MD
 Shira and Steven Klein
 Lenore and Jim Kolhoff
 Virginia and Edward Koster
 Martha Kransdorf
 Linda Krieger
 Lily Ladin
 Sarah and Seymour Lampert
 Judie and Jerold Lax
 Julianne and Louis Leonard
 Sue Leong
 Carol Lessure

Janice and Andrew Lieberman
 Gerald Linderman
 Monique Lopez-Geiman
 and Gerald Geiman
 Marjorie and K. Allin Luther
 Judith and William Lynn
 C. D. Macaulay
 and J. David Singer
 Michele Madden
 Marjorie and David Mastie
 Joseph Mattimoe and Hank Prebys
 Jill McDonough
 and Greg Merriman
 Catherine and David McDowell
 Kristin McGuire
 and David Lovenschuss
 Sara and Herbert Meingast
 Marilyn and Allen Menlo
 Susan R. Miller and Allen Batteau
 Roni A. Moncur
 Suzanne Mondalek
 Marion Morris
 Michael J. Morse
 Andrew Moss
 Peter and Betty Mosshart
 Kathleen E. Muench
 Lisa and James Murphy
 Cynthia and Verlyn Nachtrieb
 Nancy Nelson
 and Richard Hughes
 Sharon and Charles Newman
 Cynthia Nicely
 Glenina and Michael Nolte
 Marylen Oberman
 Darlene and Thomas O’Brien
 Zibby and Robert Oneal
 Persephone and John Pappas

Mary and John Pappas	Jean M. Robinson	Beth and Ray Shemanski	Joyce and John VanHaren
Barbara Peitsch and Moshe Tzalel	Connie A. Robinson	Sarai Brachman Shoup and David Shoup	Jody Veroff
Sheila and Owen Perlman, MD	David Robinson, II	Anne and Martin Sichel	Nancy Vettorello
Ron Perry	Barbara Rosen	Ruth Simmons	Megan L. and J.J. Vicari
Nelly and Frank Petrock	Marlene Ross	Elizabeth and Vernon Soden	Cam Vozar
Eunice Phillips	Donna and Dennis Roth	Diane Solomon	Mary and Kim Waldo
Louise Piranian	Phyllis and Dean Russell	Magdalena Spiewla	Ann Watkins-Schreiber and Emanuel Schreiber
Donna and Howard Plotkin	Carolyn and John Sampselle	Elizabeth D. and John E. Sprague	Jane and Price Watts
Valerie Polakow	Laura Sanders	Gloria Stapp	Harold Weiss
Ethel Potts	Leslie and John Sapp	Gari Stein	Beth Wilensky
Glenda and Larry Radine	Rosemary Sarri	Tracey Stewart and William C. Burgard	Pat and Ron Willett
Lisa Raycraft and Stephen O'Rielly	Lisa and Howard Saulles	Mary and John Strouss	Mary S. Williams
Beth Glover Reed	Jane L. and Albert J. Sayed	Elizabeth A. Stumbo, MD and Stephan F. Taylor	Ellen Wilt
Carol and Gerald Rees	Jacob Sayraf	Donald Sugerma	Kathy and Mark Winterhalter
Debra and Mark Reichard	Walter Scheider	Jewell Taylor	Katherine and Peter Woo
Anne and Frederick Remley	Elizabeth and Peter Schick	Denise A. Thal and David M. Scobey	Lynn and David Wooten
Geneva and Utus Rhodes	Karyn and David Schoem	Heather and Steven Tower	Audrey Wu
Dawn and Terry Riddle	Barbara and Brett Seabury	Fredda and Paul Unangst	Ann and Karl Zinn
Sophia and Nooraldeen Ridha	Eithel Sech	Suzanne and Carl Van Appledorn, MD	Diane and Jerry Zmikly
Vicky and James Rigney	Sonia and Forrest Shaw		Fran and Jens Zorn
Catherine and Thomas Roberts	Kent Sheets		
	Ingrid and Clifford Sheldon		

United Way Donors

Anonymous	Cheryl Cole
Mary and Harvey Amoe, MD	Mary Cole
Meg Amos	Margaret Conger
Eleanor Anasar and Robert Fulton	Bruce Conybeare
Margaret T. Andrecovich	Carol Cramer and Thomas Longworth
Tissy and Rudi Ansbacher, MD	Denise L. Crawford
Toni Antonucci and James Jackson	Colleen Croxall
Rhoshebie N. Argo	Thomas Darnton
Joanne Bailey	Myrna Davis
Karen and John Barks	Vicki Degraffinried
Jack Bauer	Richard Deighton
Kris Ann and Robert Berger	Dennis Delano
Christine M. Berry	Elena and Nicholas Delbanco
Diane and Sarr Blumson	Rebecca Demo
Francine Bomar	Michelle L. Diepenhorst
Melissa L. Bortles	Greg Doucette
Richard Bowerman, MD	Judy Dupuis
Sabra Briere and David Cahill	Shon Ann Dwyer
Elaine Brock	Richard G. Eckoff
Karen and Kevin Carney	Janet A. Elliott
Linda and Robert Chatters	Jean A. Lawton and James H. Ellis, MD
Traci Clark	
Andrew Cluley	

"The approach of care here at The Corner important. It's different from other clinics in that it helps young people specifically feel safe to open up.

- A Corner physician

Sarah Ely	Sally and Raymond Hutchinson
Cynthia Every	Alissa C. Huth-Bocks
Cynthia J. Falkenstein	Alan Israel
Kimberly and Phillip Ferrell	Judith A. Ivacko, MD and Tom Ivacko
Susan Fielder	Janet S. Jackson
Lucinda M. Fleckenstein	Karla Jackson-Terry
Nancy Frushour	Matthew T. Jane
Helen Gates-Bryant	Linda and Bob Johnson
Anne and Bruno Giordani	Mary Z. and Kent Johnson, MDs
Kim Graham	Linda and James Jones
Don Haefner and Cynthia Stewart	Douglas O. Keasal
Teri Hankins	Laura and James Kosteva
Ruth M. Heyn, MD	Alina Kotlyar
Rebecca Hite	Jeffery Krcmarik
Steven Holda	Marvin Krislov and Amy Sheon
Wendy and James House	Lincoln Lee
Wanda Hunt	

Carol and Rick Leyshock
 Nancie and Donald Loppnow
 Betsy Lozoff, MD
 Melissa Mayes
 Kristin McGuire
 and David Lovenschuss
 Michigan Information Technology
 Systems
 Sarah Middlemas
 Rees Midgley, Jr.
 and Jane Wilson Coon
 Jill Mitchell
 Norma and Charles Monsma

Sherry and Seth
 Moravy-Penchansky
 Thomas Morrow
 Gilda Myles
 Roland Neynabor
 Michelle S. Okun
 Lori Partin
 Carla Patrick-Fagan
 Gloria and Ronnie Peterson
 Pfizer
 Michal E. and David Porath
 Janis Price
 Gretchen Reeves

Sandra Richards
 Jane L. and Albert J. Sayed
 Susan Sefansky
 Mary Sexton
 Kate Jones Share
 and David Share, MD
 Elaine and Ronald Shaw
 Eleanor Shelton
 Jean and Thomas Shope, MD
 Stephanie Smith
 Lawrence Stewart
 Gail and Alan Sugar, MD
 Barbara and Thomas Sullivan

Richard J. Surratt
 Helene Tamarin and Marc Ruben
 Ann Tarrier
 Lisa Turner, MD
 and Daniel Turner, MD
 Sally and Cosmas Van De Ven, MD
 Quinta Vreede
 Zelma Weisfeld
 Janis Weston
 Nannette White
 Teri Williams
 Mayer and Joan Zald

In-Kind Donors

Mary and Harvey Amoe, MD
 Borders Hometown Sharing
 Program
 Sabra Briere and David Cahill
 Alma Brown
 Brownie Troop 849
 Brittaney Bryant
 Cabel & Haden
 Deborah and David Char
 Christine and Matthew Doyle
 First Presbyterian Church

First United Methodist Church
 Kristen Freshley
 David Gordon, MD, UM Minority
 Health Research Program
 Hands All Around Quilters
 Dr. and Mrs. H. Mark Hildebrandt
 Jewish Community Center 3rd
 Friday Havurah
 Jewish Cultural Society
 Sandie Jones
 Trish Joyce and Steven Slack, MD
 Junior League of Ann Arbor

Alyssa Kleinsmith
 Milbrey Leighton
 Lincoln Community Church
 Lincoln Community United
 Methodist Church
 Doreen Mendelssohn
 Christine Modey and Barry Fuller
 Pfizer Global R&D, Ann Arbor
 Labs
 Gayle Rosen and Andy Sugarmen
 Rotary Club of Ann Arbor
 Scattered Pages Book Club

Emma Share
 St. Andrew Catholic Church
 Advent Tea
 St. John's Episcopal Knitters
 St. Joseph Catholic Church
 Helen Starman
 Kayla and Hannah Steinberg
 Jewell Taylor
 Temple Beth Emeth Sisterhood
 WCC Nursing Students --
 Nursing 131

The Corner Board
Pauline Reisner, President
Kimberly Ferrell, Secretary
Ronald Shaw, Treasurer
 David Clifford
 Matthew Cunningham,
 Treasurer-Elect
 Gloria Jackson
 Edwina Jarrett
 Lisa Lewis
 Valerie Mills,
 President-Elect
 Gayle Shore Moyer, MD
 Jean Nelson
 Simone Strong Powell
 Carole Rycus
 Hon. J. Cedric Simpson
 Nannette White

Administration

Joan Chesler, PhD, Executive
 Director
 Eleanor Anasar, MS, Education
 Director
 Suzanne Mondalek, Development
 Director
 Debbi Norwood, Finance Director
 Sabra Briere, Administrative
 Assistant

UM Cooperating Faculty and Physicians

Amy Locke, MD, Family Medicine
 Uche George, MD Family Medicine
 David Serlin, MD Family Medicine
 Cathy Bettcher, MD, Family
 Medicine
 Joy Williams, MD Family Medicine
 Jennifer Christner, MD, Pediatrics
 Pam Davis, MD, Adolescent/
 Pediatric Medicine
 Kathleen Hanlon-Lundberg, MD,
 Obstetrics

Donna Champine, MD,
 Department of Psychiatry
 Neera Ghaziuddin, MD,
 Department of Psychiatry
 Sheila Marcus, MD, Department of
 Psychiatry
 Maria Muzik, MD, Department of
 Psychiatry
 Mary McGuinness, RN-CNM,
 Nurse-Midwife

Clinic Staff

David Share, MD, MPH, Medical
 Director
 Barb Sullivan, RN, Associate
 Director/Clinic Manager
 Sandie Noll, RN, CNP, Nurse
 Practitioner
 Shannon Donegan, RN, BSN,
 OB/Women's Health Nurse
 Susan Miller, RN, Adolescent/
 Pediatric Nurse
 Melody Powers, MSW, Social
 Worker

Melisa Schuster, MSW, CSW,
 MIHP Social Worker
 Christine Doyle, Billing
 Allyson Doan, Receptionist
 Lori Partin, Receptionist
 Dawn Kupniewski, Medical
 Assistant
 Kathleen Spearman, Medical
 Assistant
 Wendy Spivey, Medical Assistant

Support and Education Services

Lydia Ahlum Hanson, Theatre
 Troupe Director/Health Educator
 Joseph Albright, Theatre Instructor
 Rob Kesselring, MA, LPC, Youth
 Aging Out Resource Manager
 Alaina Chipponeri, RD, WIC
 Coordinator
 Vicki Degraffinried, WIC Assistant
 Karin Elling, RD, Nutritionist
 Kate Jones Share, MS, Nutritionist